

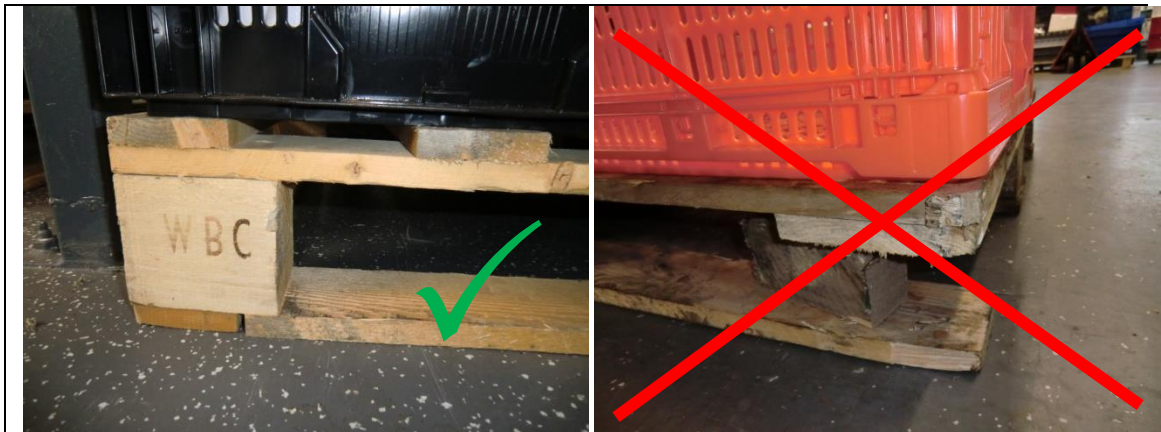
## General:

User preferably uses the crates for transport purposes and (conditioned) storage of flowerbulbs and/or perennials.

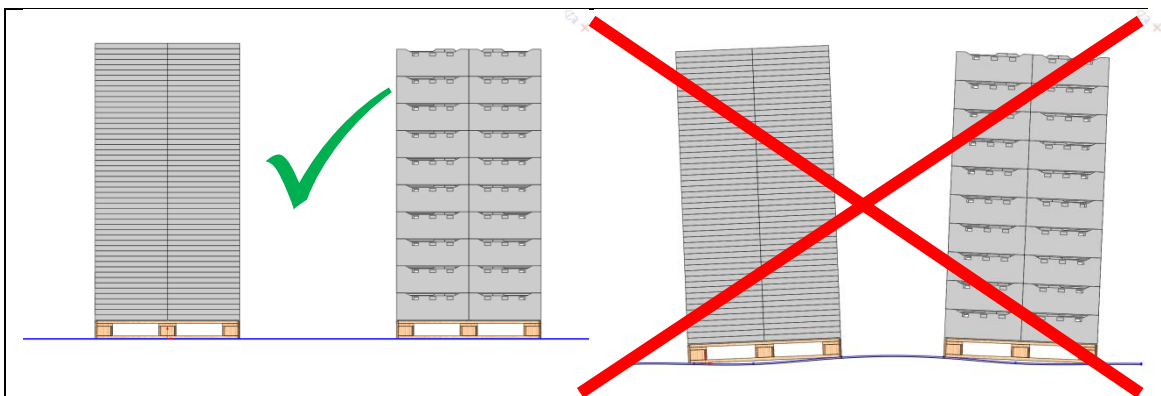
It is not recommended to transport or store products in the crates that would result in contamination or a transfer of colours, odours and/or flavours onto the crate, so that they might be less suitable for use later on.

## User manual:

- 1) Always use high-quality and undamaged pallets of the correct size.



- 2) Pallets with stacked crates may only be placed on smooth surfaces.



## 3) Ensure that the crates and pallets are stacked properly



- 4) Max. stack height = 2 pallets (both folded and unfolded).

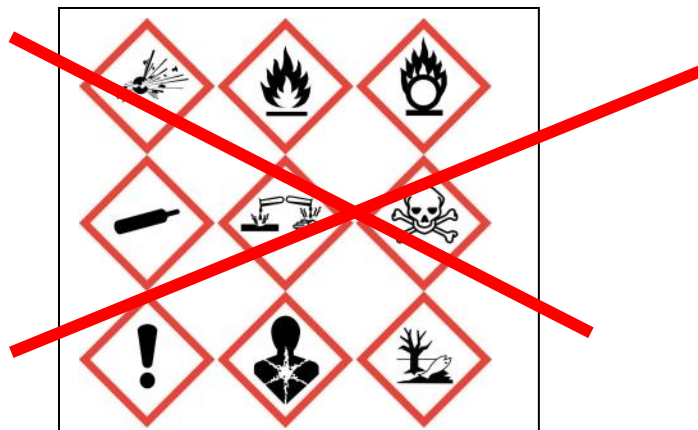


- 5) Max. load: 400 kg. per stack

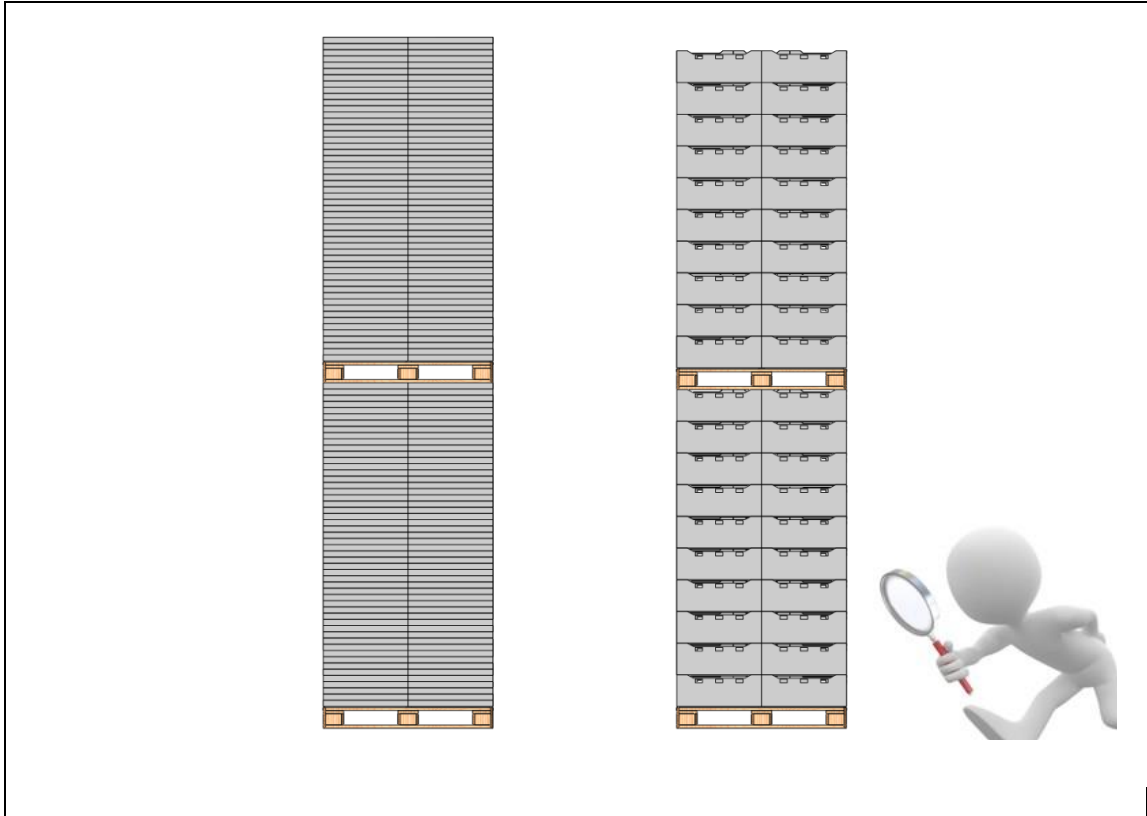
- 6) Temperature range:



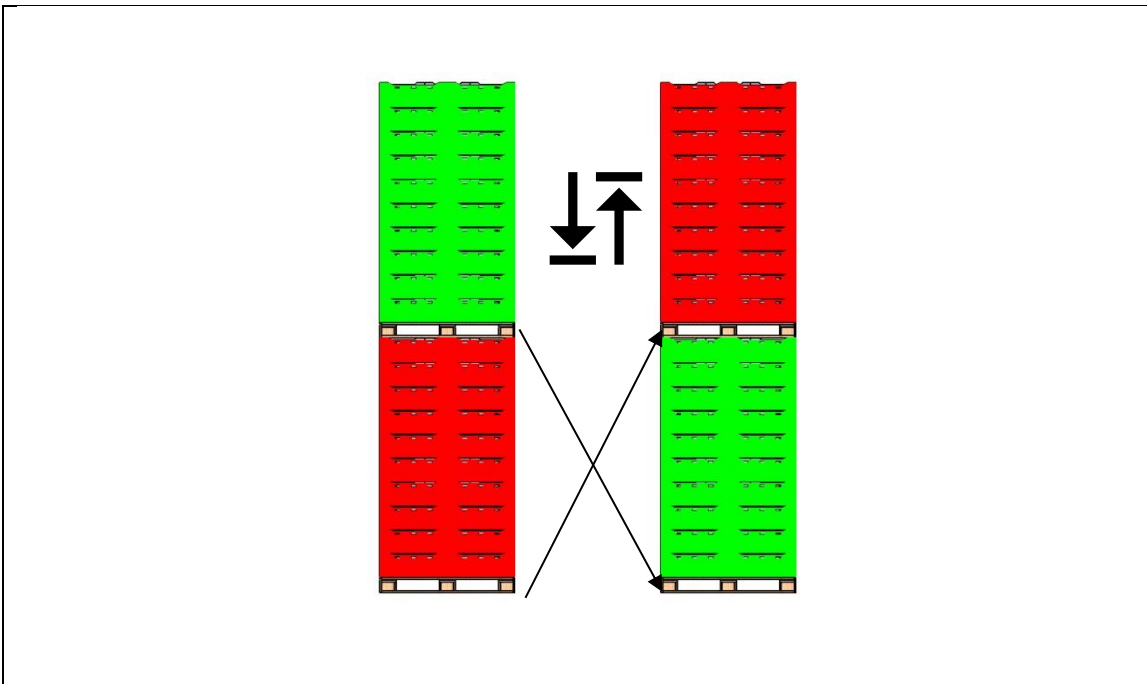
- 7) It is recommended not to use chemicals that have a negative impact on the surface of the crate.



- 8) Stacks of stored crates have to be checked every 2 weeks for damages or displacement.

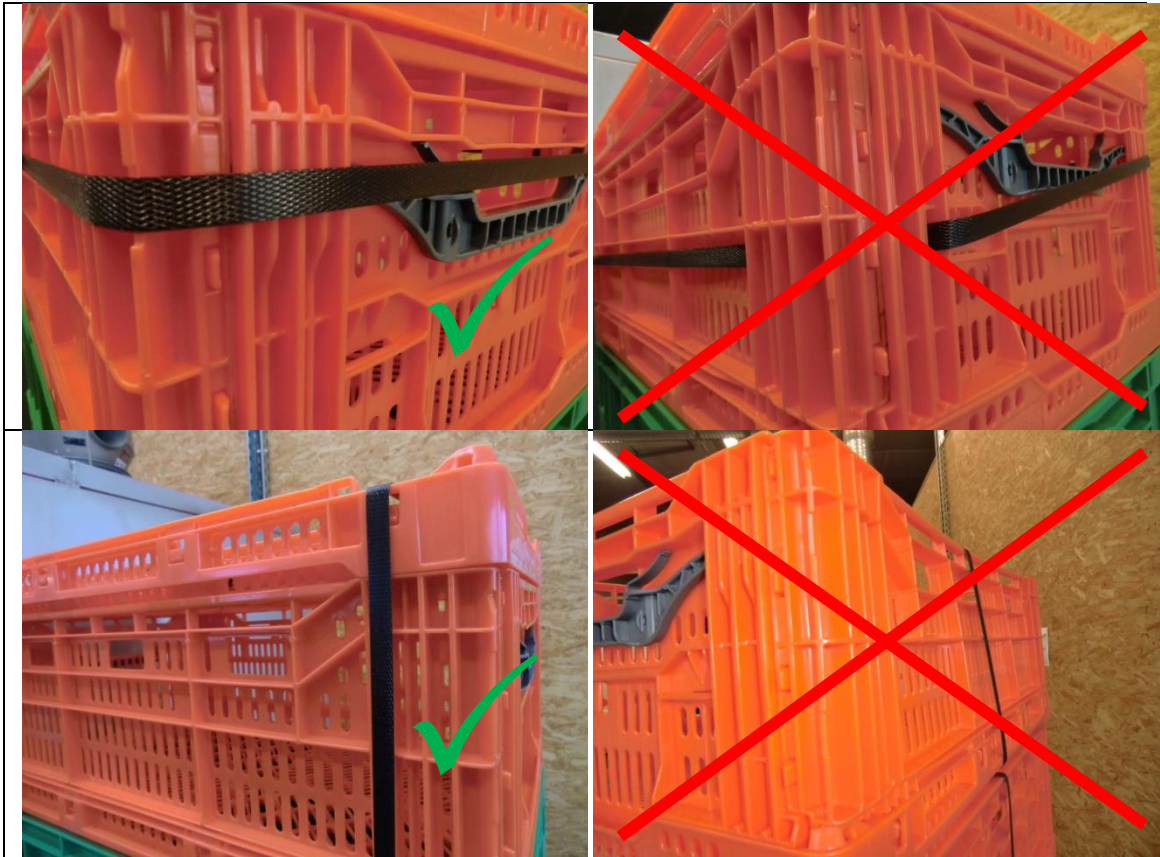


- 9) Crates stored for a long term have to be re-stacked every 6 months.

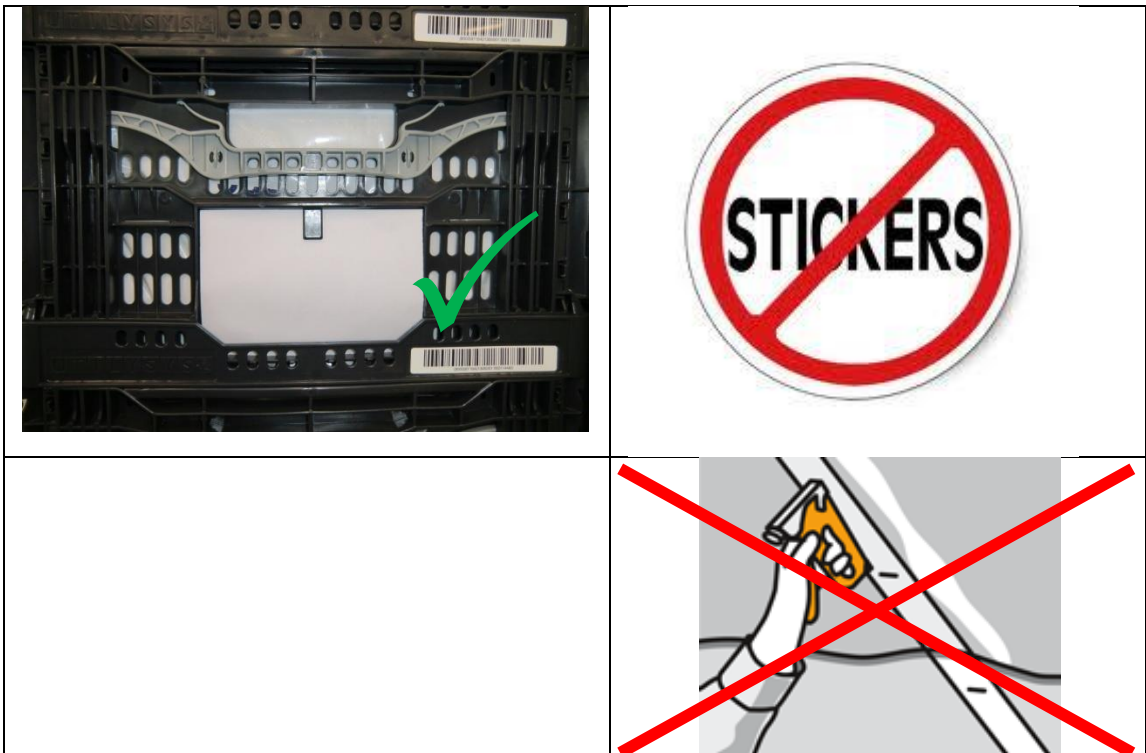




10) Fastening belts may only be used in the designated positions.



11) Only use the label holder and do not use self-adhesive labels or staples.



12) Unnecessary damages can be prevented with careful use of the crates.

